



**KRISUMI**

INDO-JAPANESE REAL ESTATE DEVELOPMENT



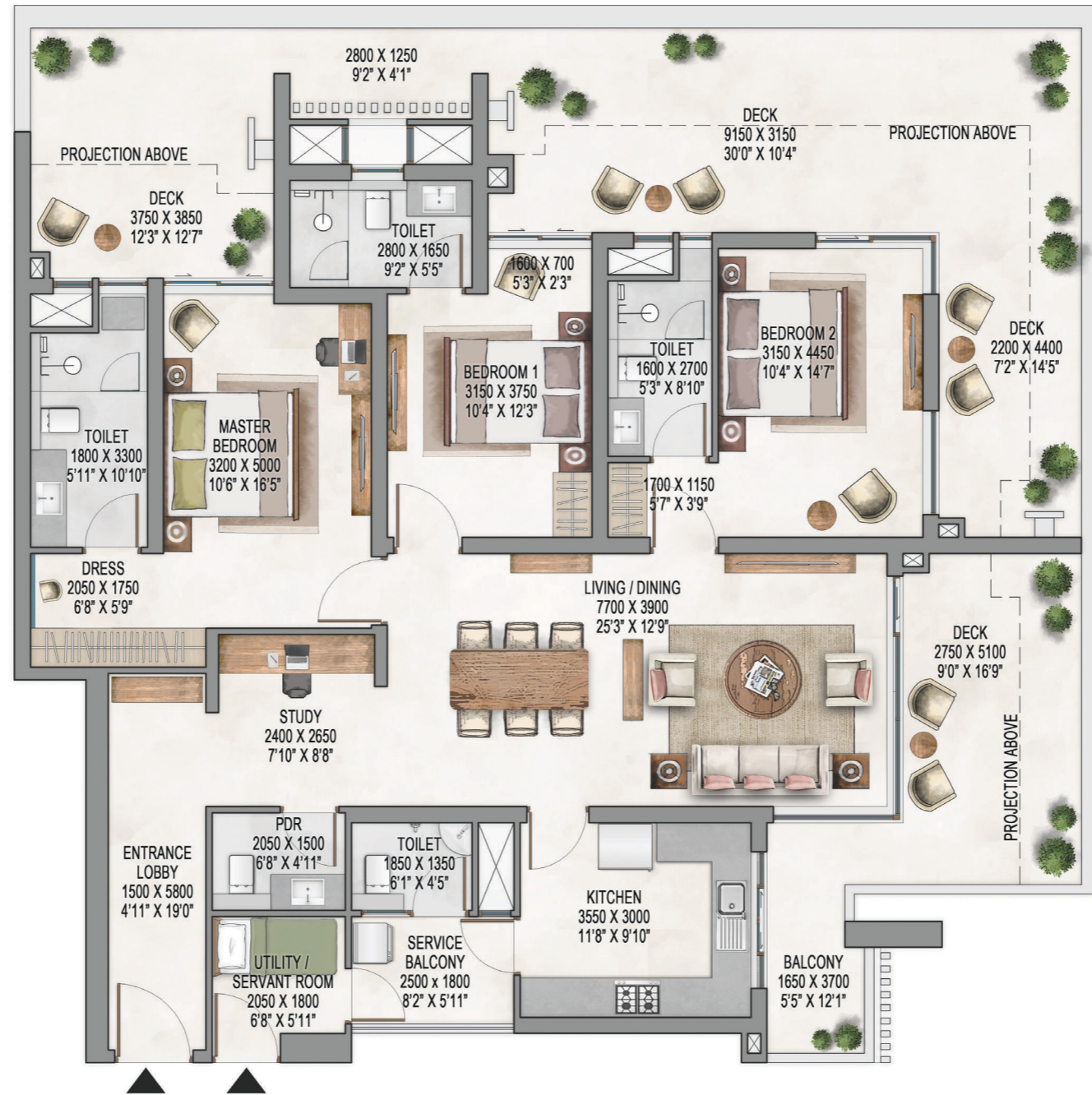
WATERSIDE RESIDENCES

**THE FOREST RESERVE**

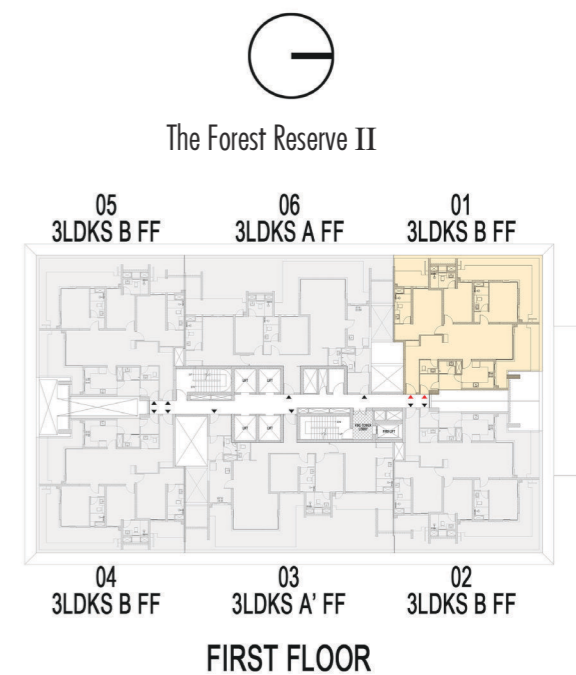
**LAYOUT PLANS**



# Waterside Residences - The Forest Reserve II - 3LDKS B FF



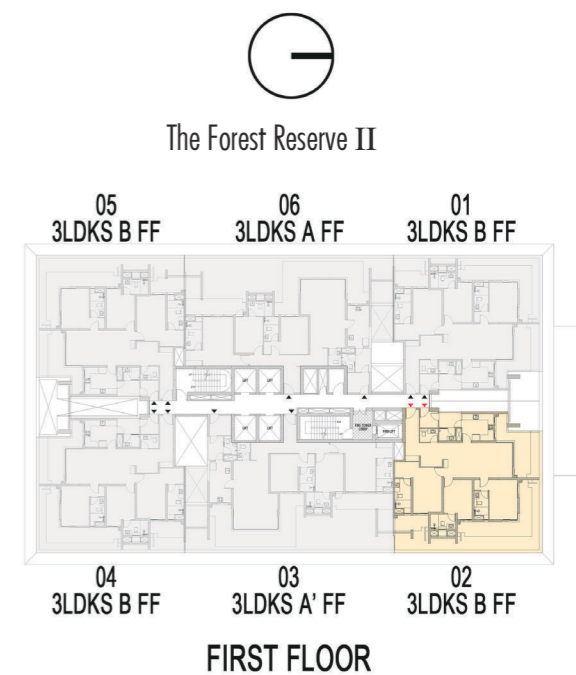
UNIT - 3LDK+SERVANT B (FIRST FLOOR)		
CARPET AREA	141.85 sq. mt.	1,527 sq. ft.
EXCLUSIVE AREA	239.64 sq. mt.	2,579 sq. ft.
SALEABLE AREA	283.70 sq. mt.	3,054 sq. ft.



# Waterside Residences - The Forest Reserve II - 3LDKS B FF



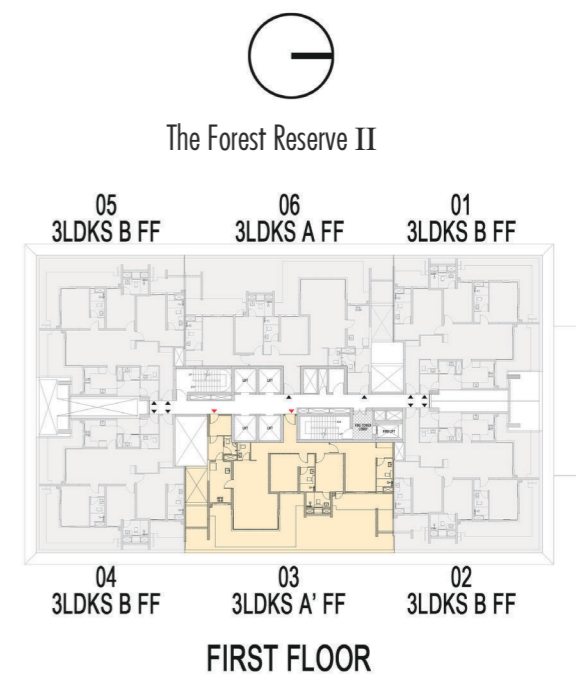
UNIT - 3LDK+SERVANT B (FIRST FLOOR)		
CARPET AREA	141.85 sq. mt.	1,527 sq. ft.
EXCLUSIVE AREA	239.64 sq. mt.	2,579 sq. ft.
SALEABLE AREA	283.70 sq. mt.	3,054 sq. ft.



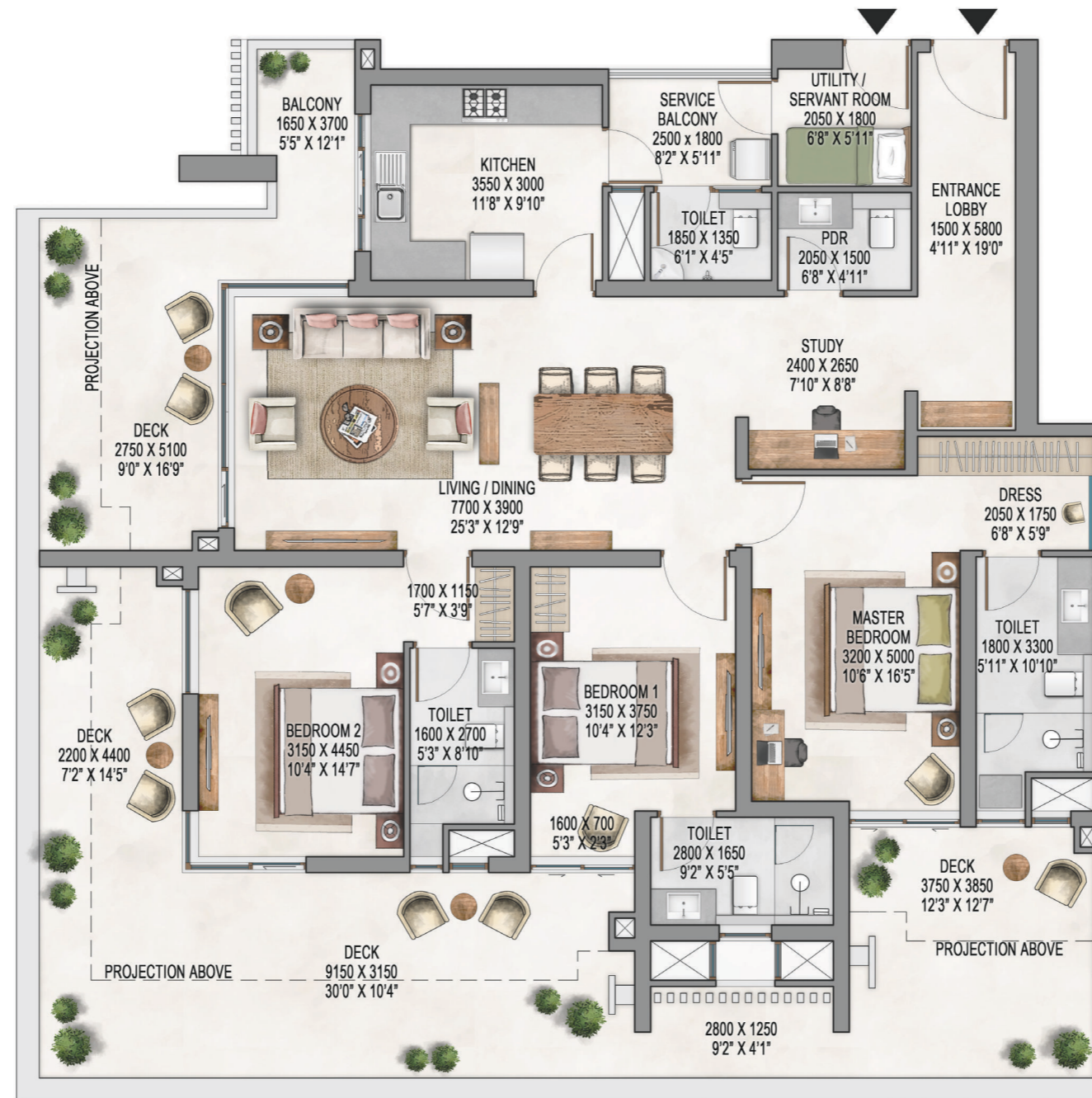
# Waterside Residences - The Forest Reserve II - 3LDKS A' FF



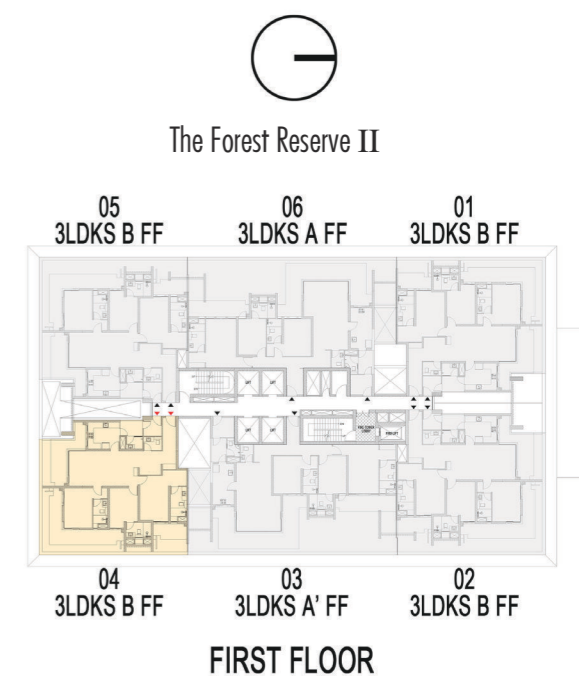
UNIT - 3LDK+SERVANT A' (FIRST FLOOR)		
CARPET AREA	148.06 sq. mt.	1,594 sq. ft.
EXCLUSIVE AREA	278.66 sq. mt.	2,999 sq. ft.
SALEABLE AREA	296.12 sq. mt.	3,187 sq. ft.



# Waterside Residences - The Forest Reserve II - 3LDKS B FF



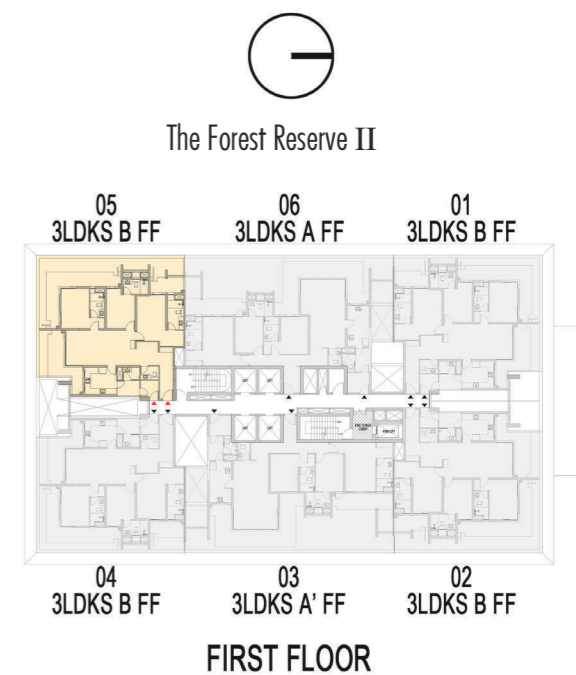
UNIT - 3LDK+SERVANT B (FIRST FLOOR)		
CARPET AREA	141.85 sq. mt.	1,527 sq. ft.
EXCLUSIVE AREA	239.64 sq. mt.	2,579 sq. ft.
SALEABLE AREA	283.70 sq. mt.	3,054 sq. ft.



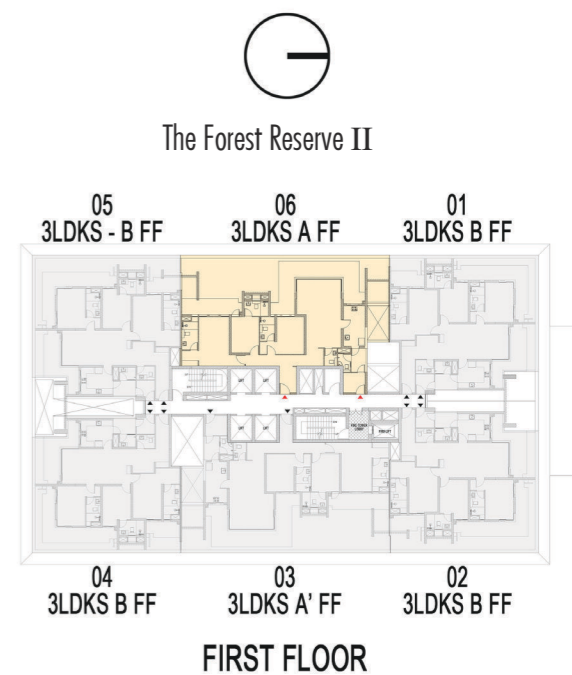
# Waterside Residences - The Forest Reserve II - 3LDKS B FF



UNIT - 3LDK+SERVANT B (FIRST FLOOR)		
CARPET AREA	141.85 sq. mt.	1,527 sq. ft.
EXCLUSIVE AREA	239.64 sq. mt.	2,579 sq. ft.
SALEABLE AREA	283.70 sq. mt.	3,054 sq. ft.



# Waterside Residences - The Forest Reserve II - 3LDKS A FF

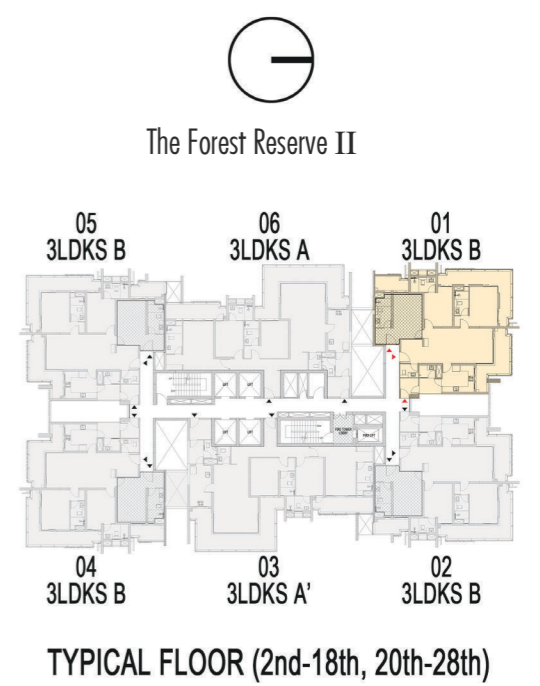


UNIT - 3LDK+SERVANT A (FIRST FLOOR)		
CARPET AREA	149.26 sq. mt.	1,607 sq. ft.
EXCLUSIVE AREA	279.92 sq. mt.	3,013 sq. ft.
SALEABLE AREA	298.52 sq. mt.	3,213 sq. ft.

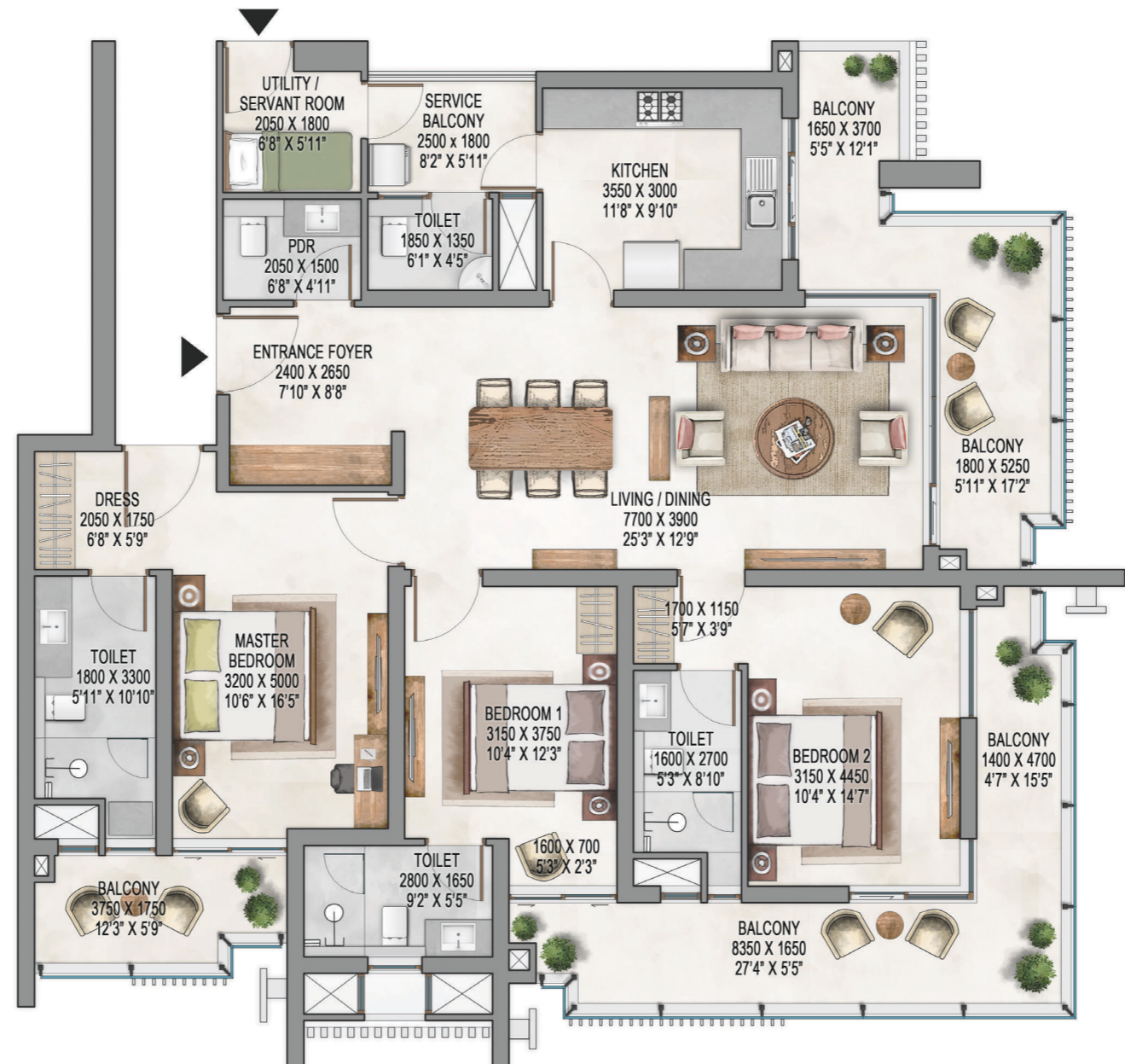
# Waterside Residences - The Forest Reserve II - 3LDKS B Typical



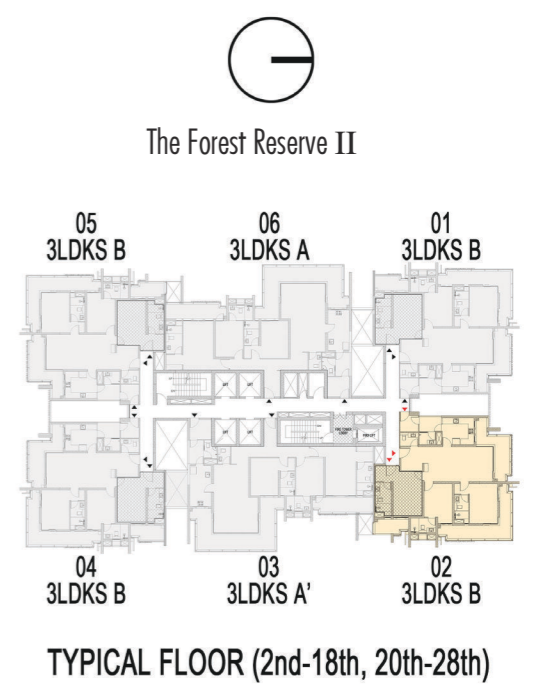
UNIT - 3LDK+SERVANT B (TYPICAL FLOOR)		
CARPET AREA	132.07 sq. mt.	1,422 sq. ft.
EXCLUSIVE AREA	191.51 sq. mt.	2,061 sq. ft.
SALEABLE AREA	240.13 sq. mt.	2,585 sq. ft.



# Waterside Residences - The Forest Reserve II - 3LDKS B Typical



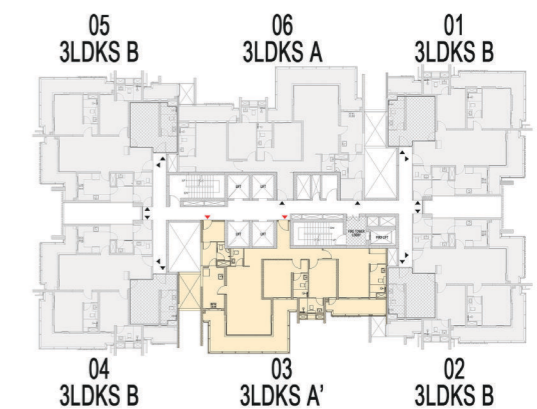
UNIT - 3LDK+SERVANT B (TYPICAL FLOOR)		
CARPET AREA	132.07 sq. mt.	1,422 sq. ft.
EXCLUSIVE AREA	191.51 sq. mt.	2,061 sq. ft.
SALEABLE AREA	240.13 sq. mt.	2,585 sq. ft.



# Waterside Residences - The Forest Reserve II - 3LDKS A' Typical



The Forest Reserve II



TYPICAL FLOOR

UNIT - 3LDK+SERVANT A' (TYPICAL FLOOR)		
CARPET AREA	148.06 sq. mt.	1,594 sq. ft.
EXCLUSIVE AREA	213.29 sq. mt.	2,296 sq. ft.
SALEABLE AREA	269.20 sq. mt.	2,898 sq. ft.

# Waterside Residences - The Forest Reserve II - 3LDKS B Typical



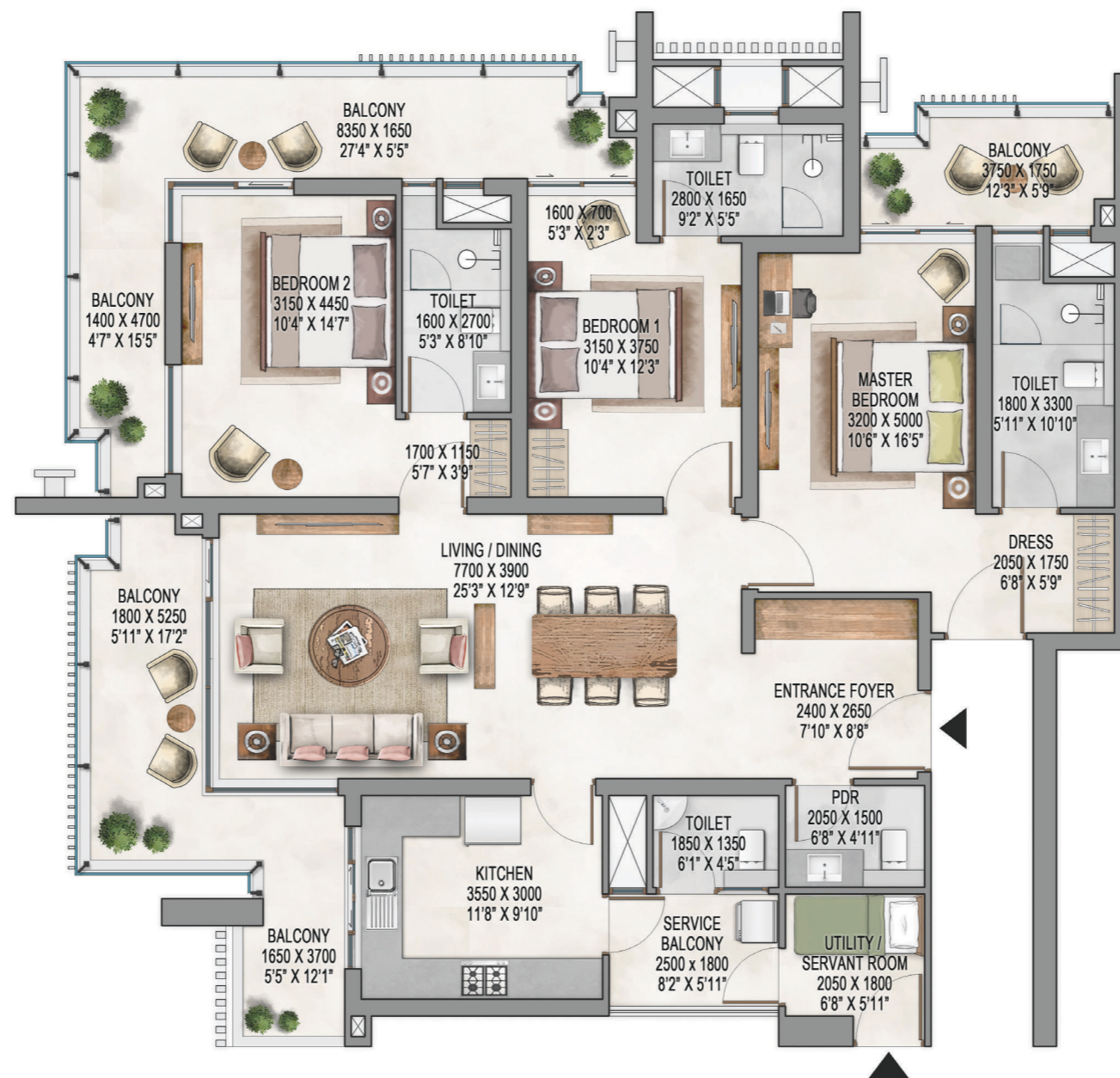
The Forest Reserve II



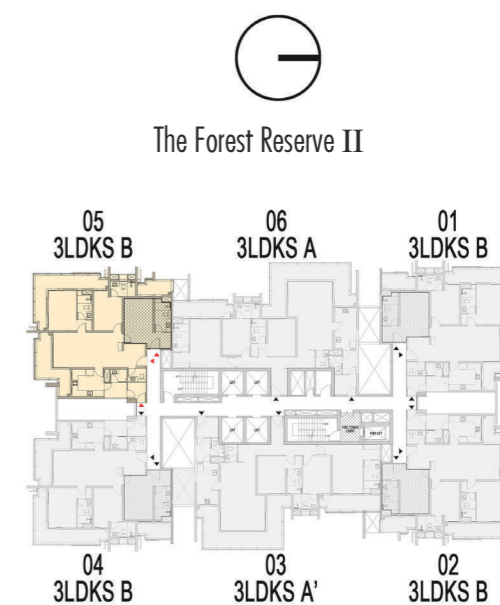
TYPICAL FLOOR (2nd-18th, 20th-28th)

UNIT - 3LDK+SERVANT B (TYPICAL FLOOR)		
CARPET AREA	132.07 sq. mt.	1,422 sq. ft.
EXCLUSIVE AREA	191.51 sq. mt.	2,061 sq. ft.
SALEABLE AREA	240.13 sq. mt.	2,585 sq. ft.

# Waterside Residences - The Forest Reserve II - 3LDKS B Typical



UNIT - 3LDK+SERVANT B (TYPICAL FLOOR)		
CARPET AREA	132.07 sq. mt.	1,422 sq. ft.
EXCLUSIVE AREA	191.51 sq. mt.	2,061 sq. ft.
SALEABLE AREA	240.13 sq. mt.	2,585 sq. ft.

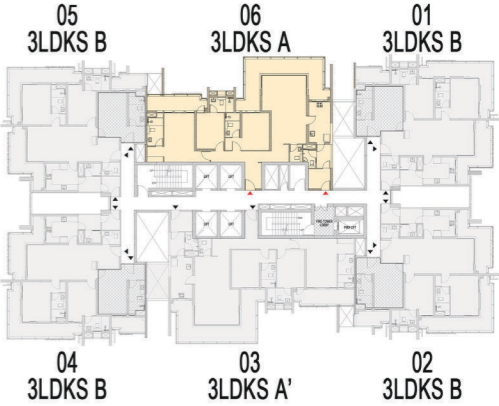


TYPICAL FLOOR (2nd-18th, 20th-28th)

# Waterside Residences - The Forest Reserve II - 3LDKS A Typical



The Forest Reserve II



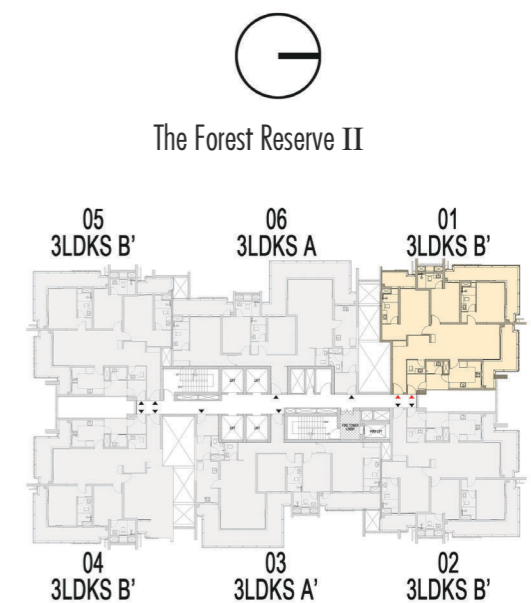
TYPICAL FLOOR

UNIT - 3LDK+SERVANT A (TYPICAL FLOOR)		
CARPET AREA	149.26 sq. mt.	1,607 sq. ft.
EXCLUSIVE AREA	214.88 sq. mt.	2,313 sq. ft.
SALEABLE AREA	271.38 sq. mt.	2,921 sq. ft.

# Waterside Residences - The Forest Reserve II - 3LDKS B' Typical



UNIT - 3LDK+SERVANT - B' (TYPICAL FLOOR)		
CARPET AREA	141.85 sq. mt.	1,527 sq. ft.
EXCLUSIVE AREA	201.63 sq. mt.	2,170 sq. ft.
SALEABLE AREA	257.91 sq. mt.	2,776 sq. ft.

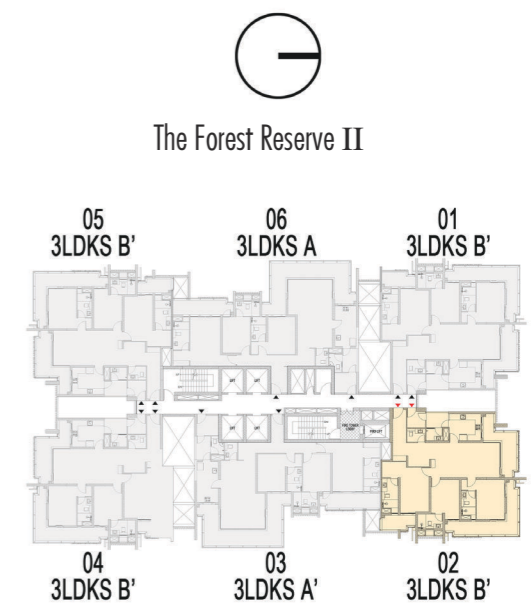


TYPICAL FLOOR(19th, 29th-41st)

# Waterside Residences - The Forest Reserve II - 3LDKS B' Typical



UNIT - 3LDK+SERVANT - B' (TYPICAL FLOOR)		
CARPET AREA	141.85 sq. mt.	1,527 sq. ft.
EXCLUSIVE AREA	201.63 sq. mt.	2,170 sq. ft.
SALEABLE AREA	257.91 sq. mt.	2,776 sq. ft.



TYPICAL FLOOR(19th, 29th-41st)

# Waterside Residences - The Forest Reserve II - 3LDKS A' Typical



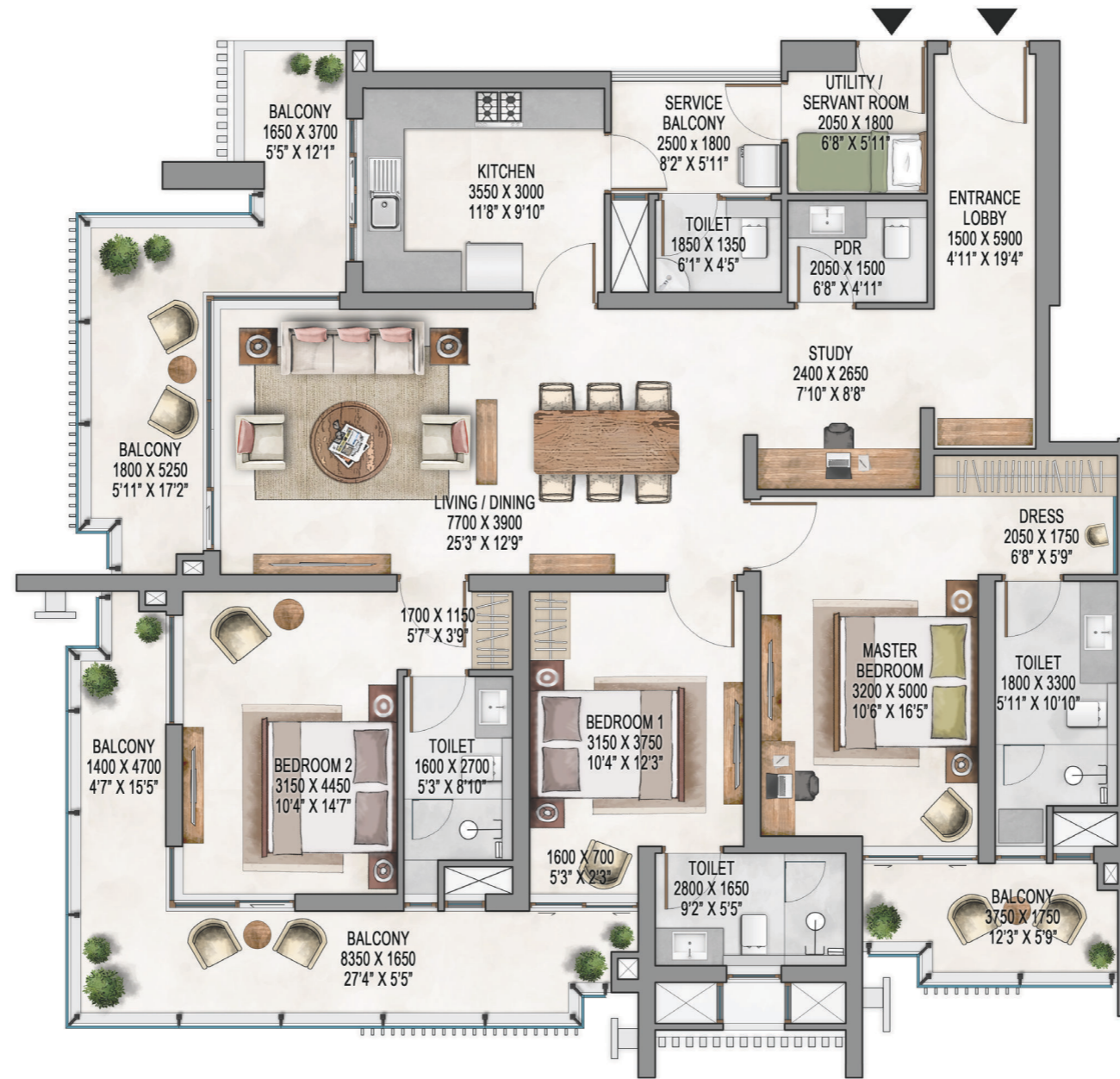
The Forest Reserve II



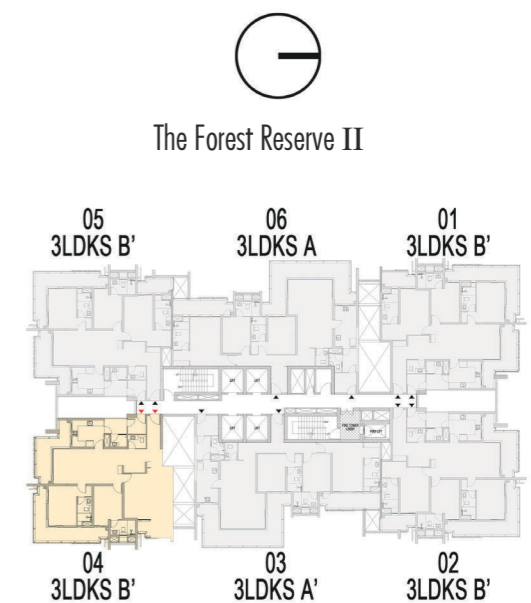
TYPICAL FLOOR

UNIT - 3LDK+SERVANT A' (TYPICAL FLOOR)		
CARPET AREA	148.06 sq. mt.	1,594 sq. ft.
EXCLUSIVE AREA	213.29 sq. mt.	2,296 sq. ft.
SALEABLE AREA	269.20 sq. mt.	2,898 sq. ft.

# Waterside Residences - The Forest Reserve II - 3LDKS B' Typical

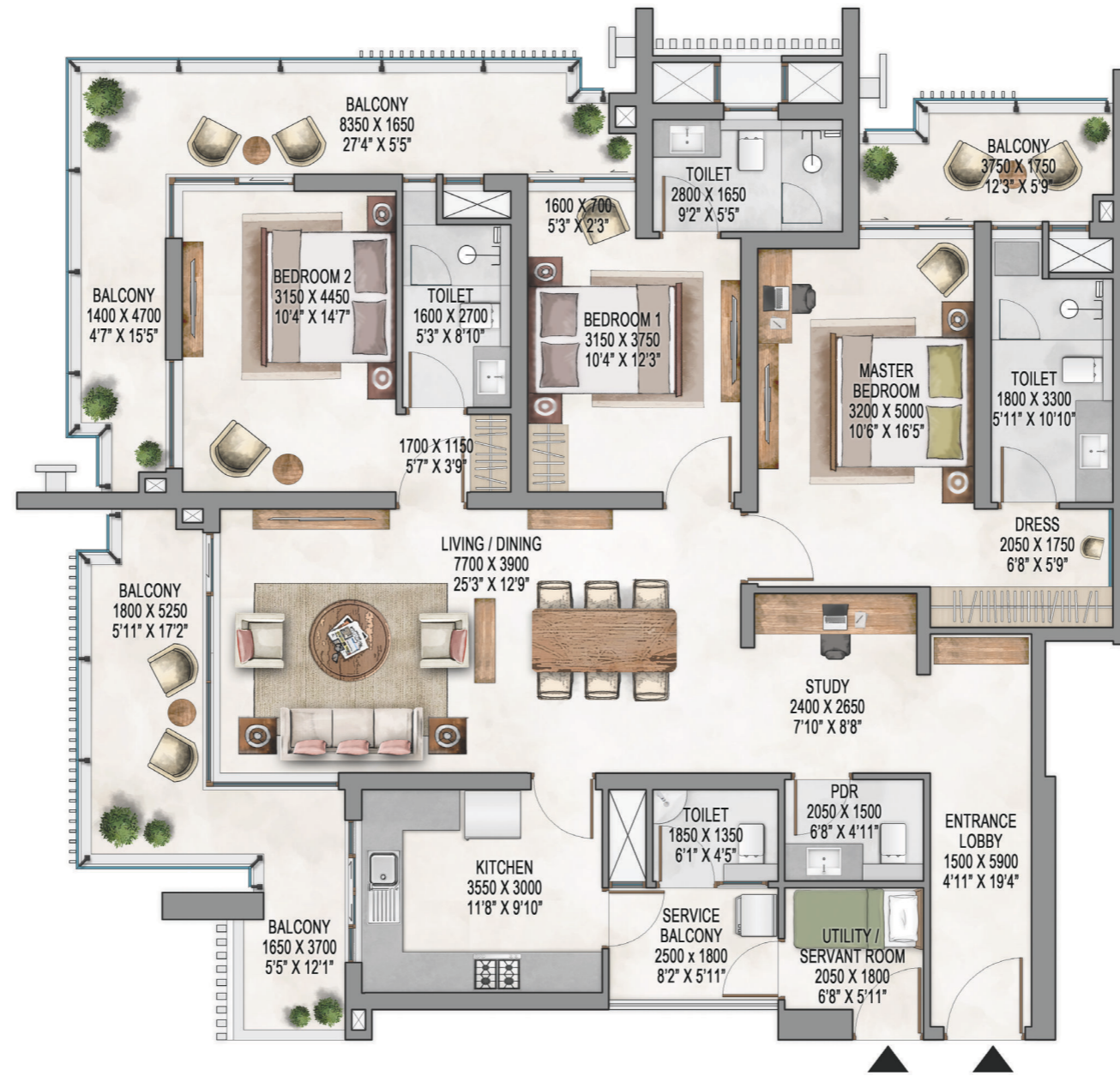


UNIT - 3LDK+SERVANT - B' (TYPICAL FLOOR)		
CARPET AREA	141.85 sq. mt.	1,527 sq. ft.
EXCLUSIVE AREA	201.63 sq. mt.	2,170 sq. ft.
SALEABLE AREA	257.91 sq. mt.	2,776 sq. ft.

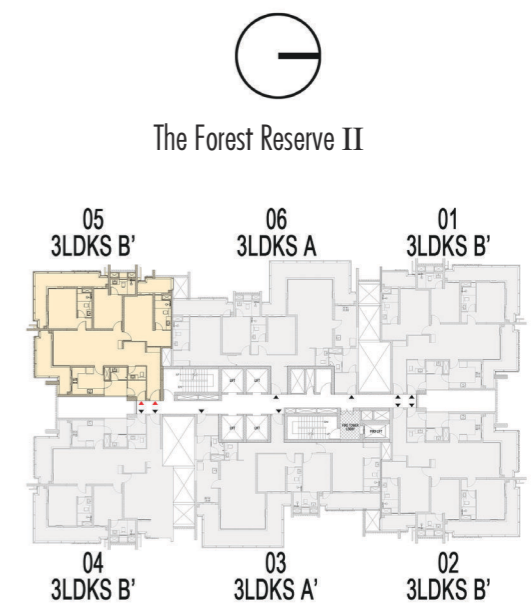


TYPICAL FLOOR(19th, 29th-41st)

# Waterside Residences - The Forest Reserve II - 3LDKS B' Typical



UNIT - 3LDK+SERVANT - B' (TYPICAL FLOOR)		
CARPET AREA	141.85 sq. mt.	1,527 sq. ft.
EXCLUSIVE AREA	201.63 sq. mt.	2,170 sq. ft.
SALEABLE AREA	257.91 sq. mt.	2,776 sq. ft.



TYPICAL FLOOR(19th, 29th-41st)

# Waterside Residences - The Forest Reserve II - 3LDKS A Typical



The Forest Reserve II



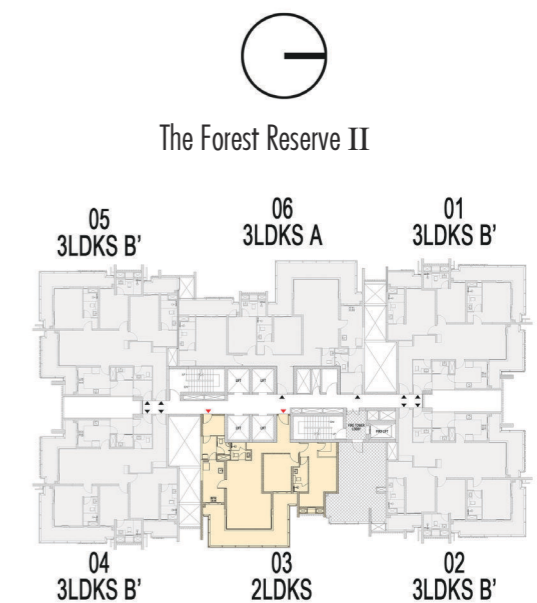
TYPICAL FLOOR

UNIT - 3LDK+SERVANT A (TYPICAL FLOOR)		
CARPET AREA	149.26 sq. mt.	1,607 sq. ft.
EXCLUSIVE AREA	214.88 sq. mt.	2,313 sq. ft.
SALEABLE AREA	271.38 sq. mt.	2,921 sq. ft.

# Waterside Residences - The Forest Reserve II - 2LDKS Refuge

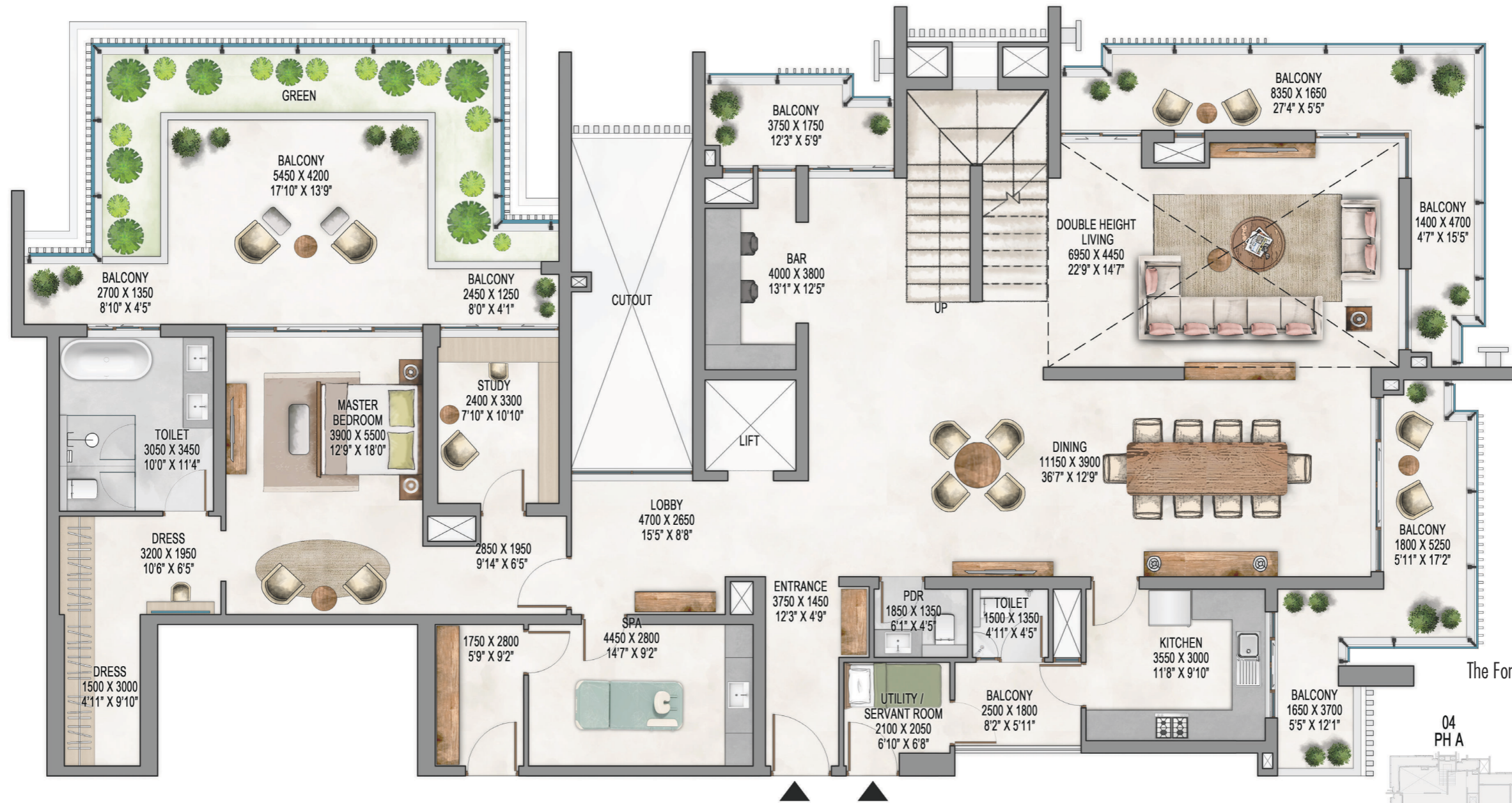


UNIT - 2LDK+SERVANT (REFUGE FLOOR)		
CARPET AREA	117.98 sq. mt.	1,270 sq. ft.
EXCLUSIVE AREA	169.30 sq. mt.	1,822 sq. ft.
SALEABLE AREA	214.51 sq. mt.	2,309 sq. ft.

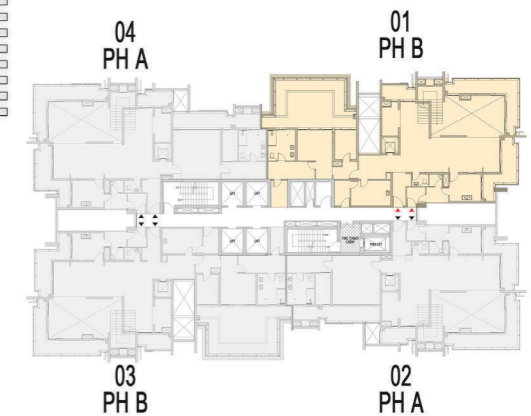


REFUGE FLOOR (19th,29th,38th)

# Waterside Residences - The Forest Reserve II - Pentouse B Lower Level



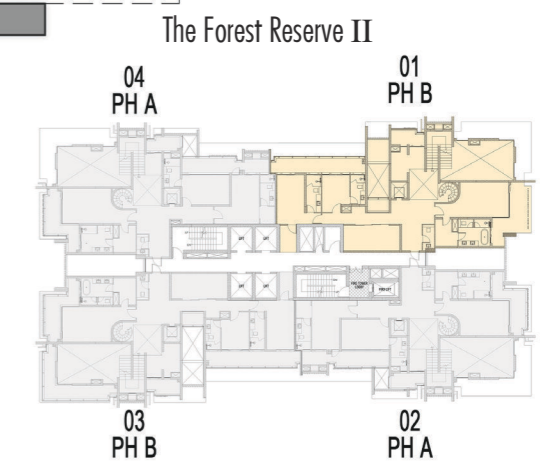
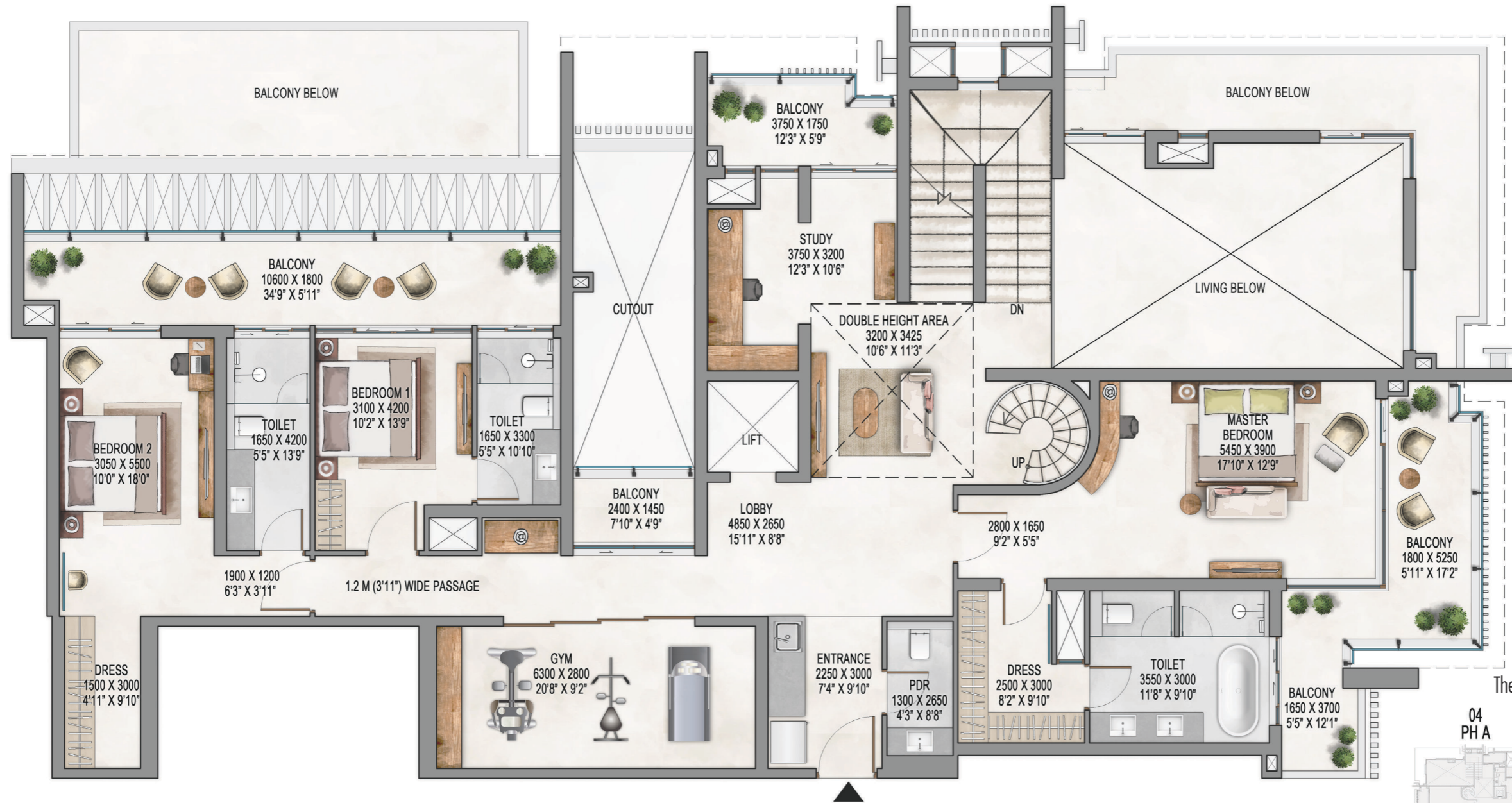
The Forest Reserve II



42nd FLOOR

UNIT - PENTHOUSE B LOWER LEVEL		
CARPET AREA	433.32 sq. mt.	4,664 sq. ft.
EXCLUSIVE AREA	768.61 sq. mt.	8,273 sq. ft.
SALEABLE AREA	866.64 sq. mt.	9,328 sq. ft.

# Waterside Residences - The Forest Reserve II - Pentouse B Upper Level



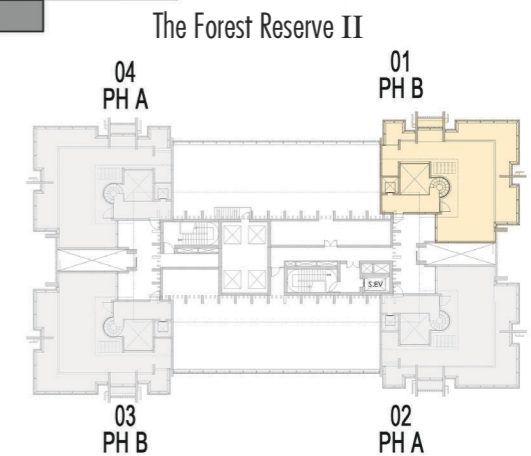
43rd FLOOR

UNIT - PENTHOUSE B UPPER LEVEL		
CARPET AREA	433.32 sq. mt.	4,664 sq. ft.
EXCLUSIVE AREA	768.61 sq. mt.	8,273 sq. ft.
SALEABLE AREA	866.64 sq. mt.	9,328 sq. ft.

# Waterside Residences - The Forest Reserve II - Pentouse B Terrace Level

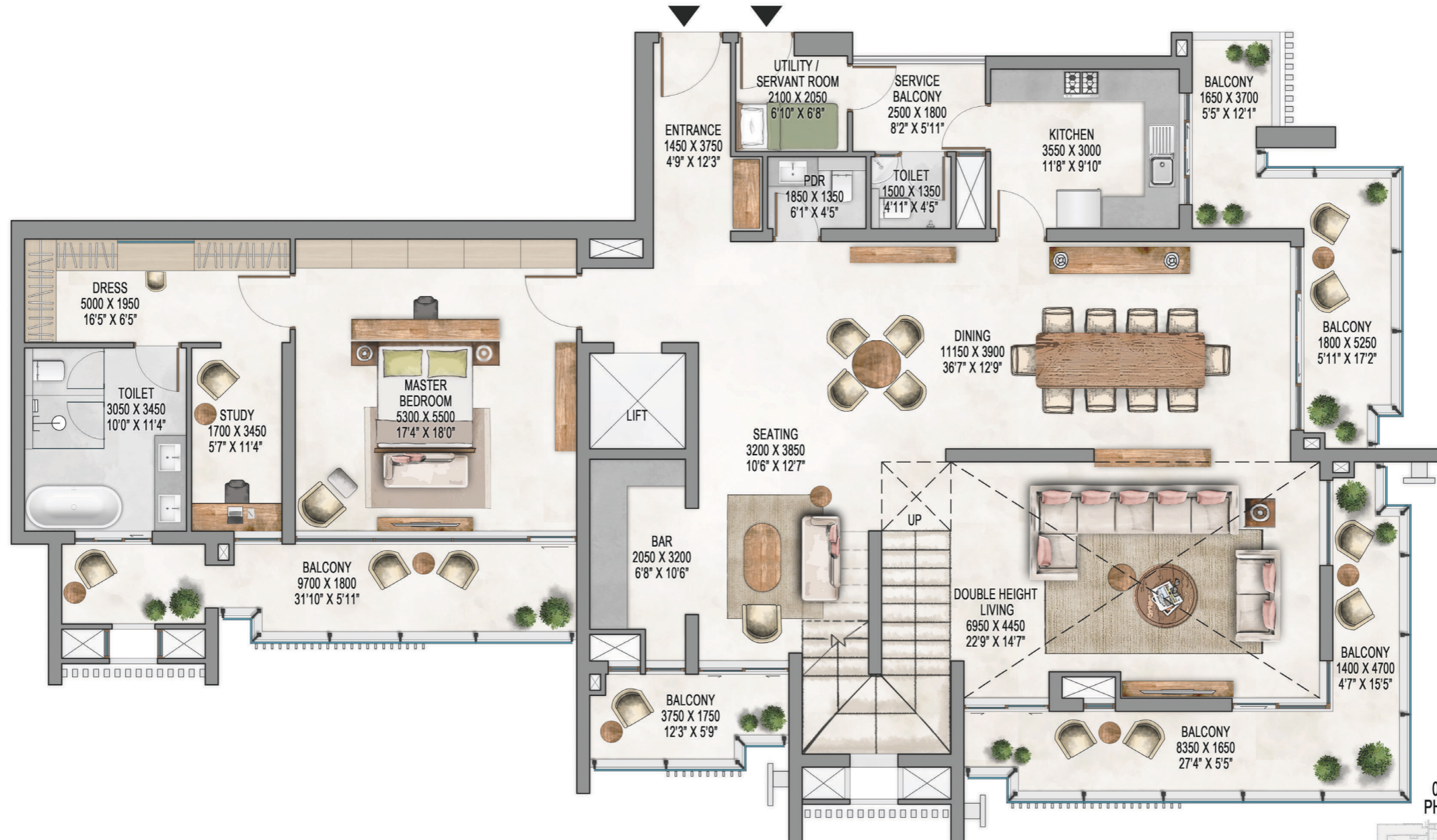


UNIT - PENTHOUSE B TERRACE LEVEL		
CARPET AREA	433.32 sq. mt.	4,664 sq. ft.
EXCLUSIVE AREA	768.61 sq. mt.	8,273 sq. ft.
SALEABLE AREA	866.64 sq. mt.	9,328 sq. ft.

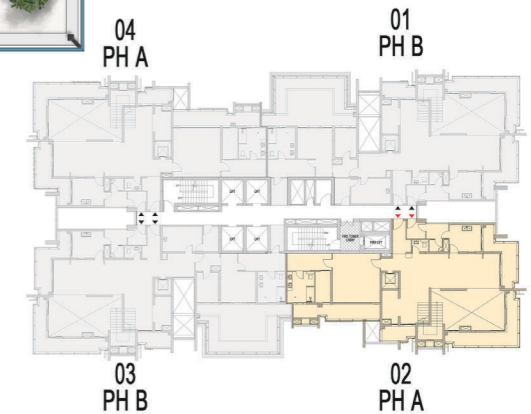


44th FLOOR

# Waterside Residences - The Forest Reserve II - Pentouse A Lower Level



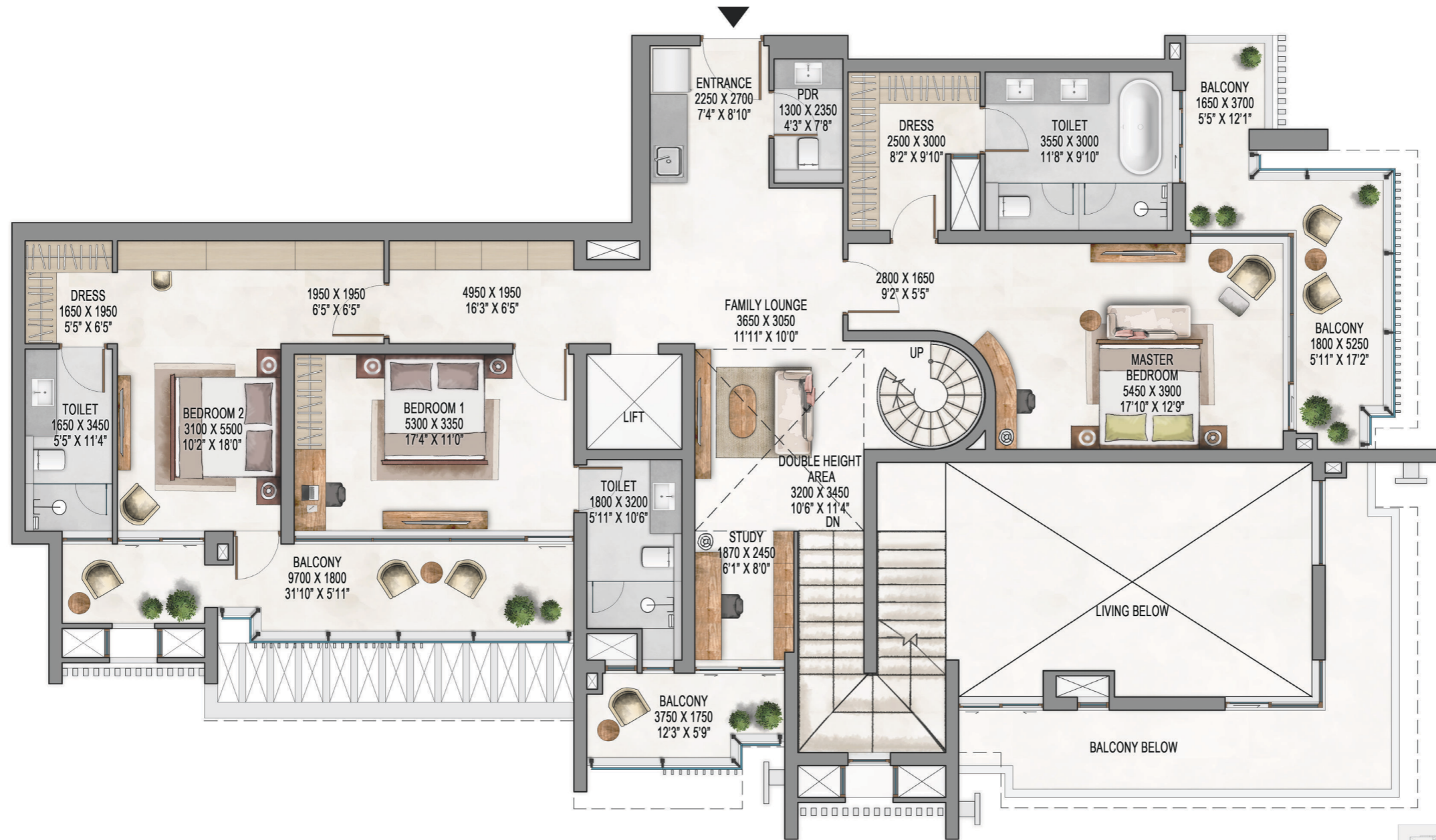
The Forest Reserve II



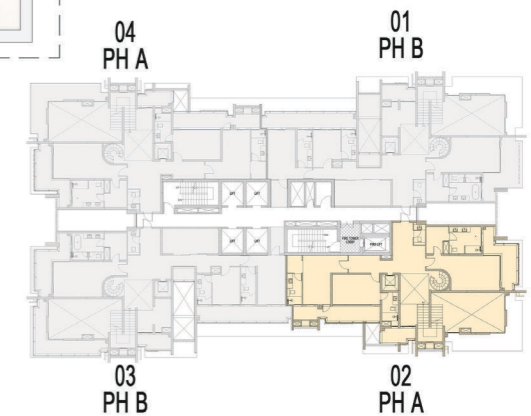
42nd FLOOR

UNIT - PENTHOUSE A LOWER LEVEL		
CARPET AREA	392.62 sq. mt.	4,226 sq. ft.
EXCLUSIVE AREA	687.39 sq. mt.	7,399 sq. ft.
SALEABLE AREA	785.24 sq. mt.	8,452 sq. ft.

# Waterside Residences - The Forest Reserve II - Pentouse A Upper Level



The Forest Reserve II



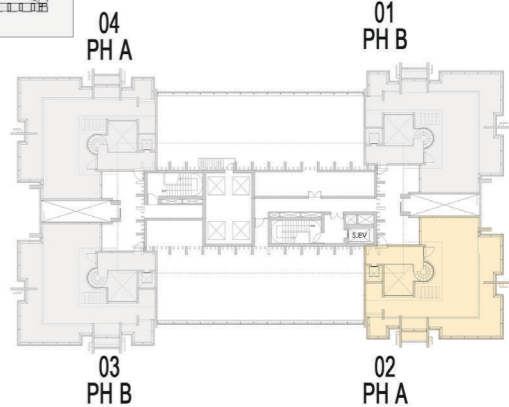
43rd FLOOR

UNIT - PENTHOUSE A UPPER LEVEL		
CARPET AREA	392.62 sq. mt.	4,226 sq. ft.
EXCLUSIVE AREA	687.39 sq. mt.	7,399 sq. ft.
SALEABLE AREA	785.24 sq. mt.	8,452 sq. ft.

# Waterside Residences - The Forest Reserve II - Pentouse A Terrace Level



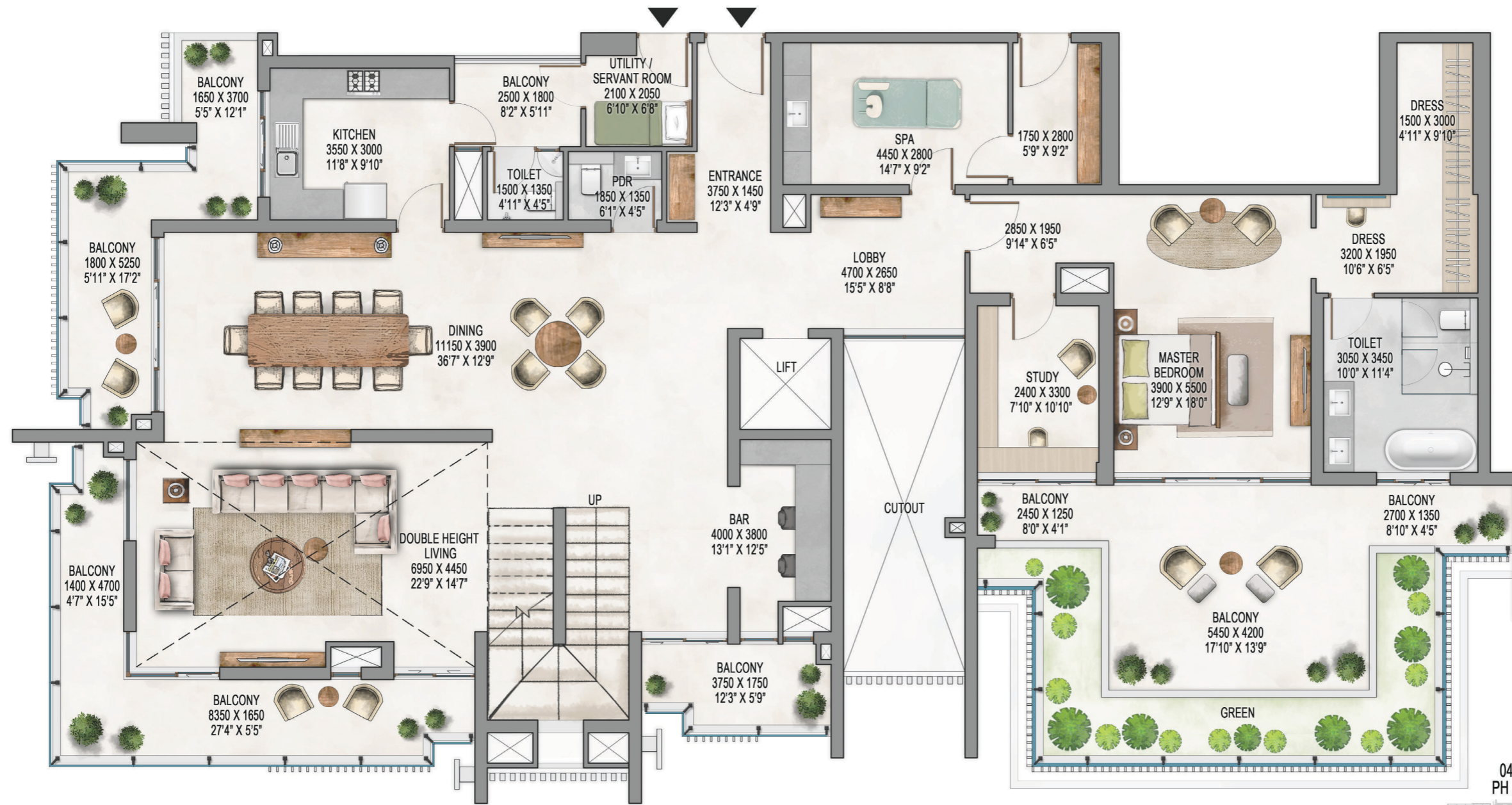
The Forest Reserve II



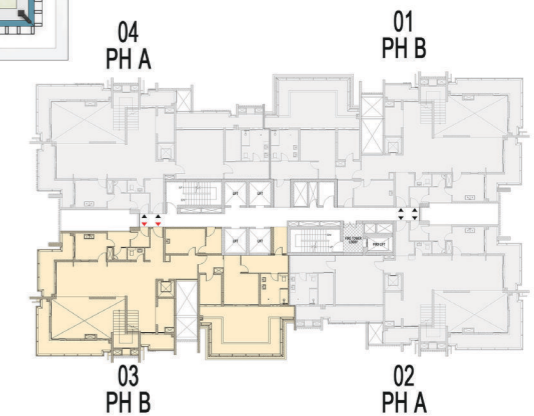
44th FLOOR

UNIT - PENTHOUSE A TERRACE LEVEL		
CARPET AREA	392.62 sq. mt.	4,226 sq. ft.
EXCLUSIVE AREA	687.39 sq. mt.	7,399 sq. ft.
SALEABLE AREA	785.24 sq. mt.	8,452 sq. ft.

# Waterside Residences - The Forest Reserve II - Penthouse B Lower Level



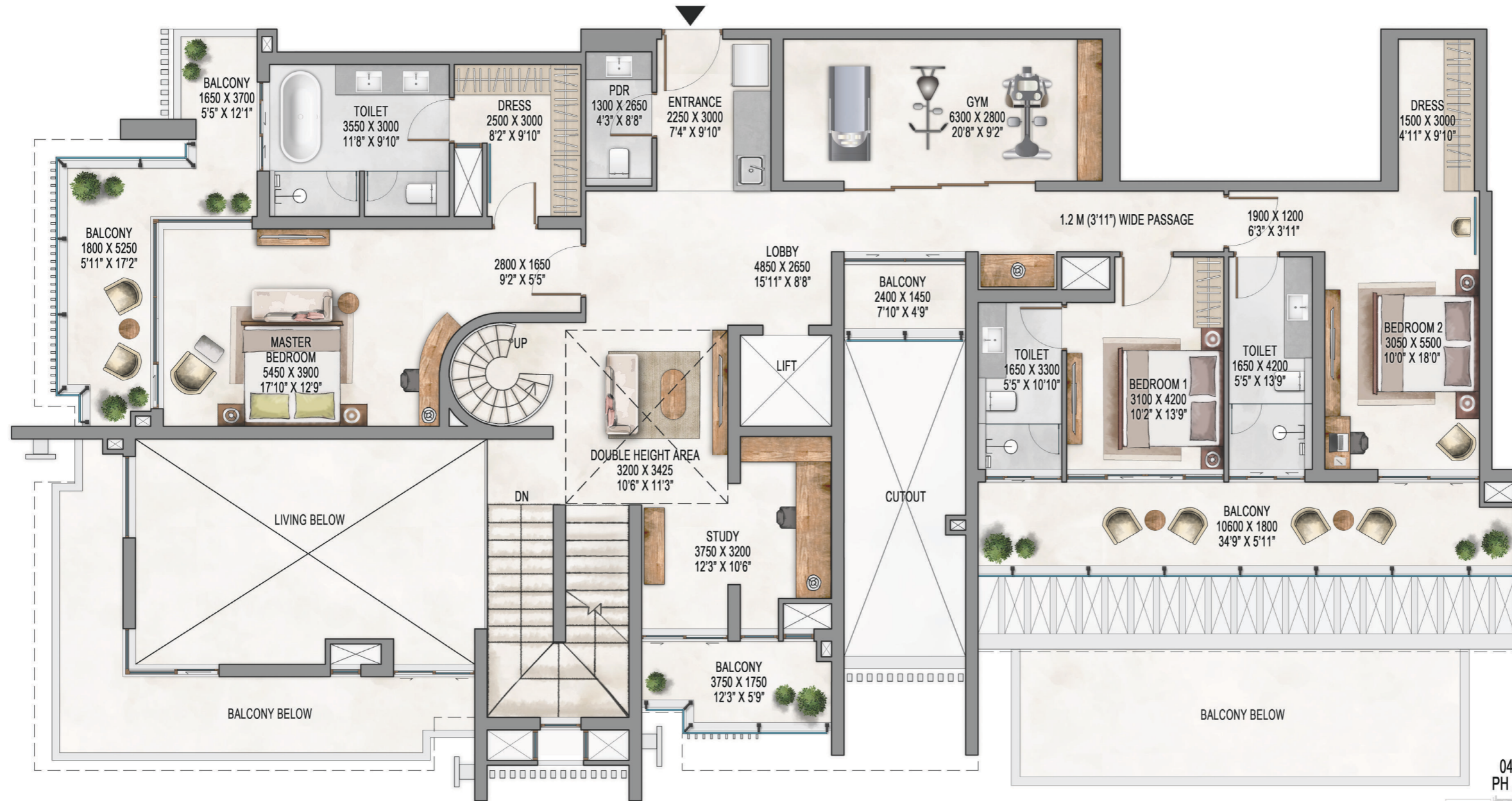
The Forest Reserve II



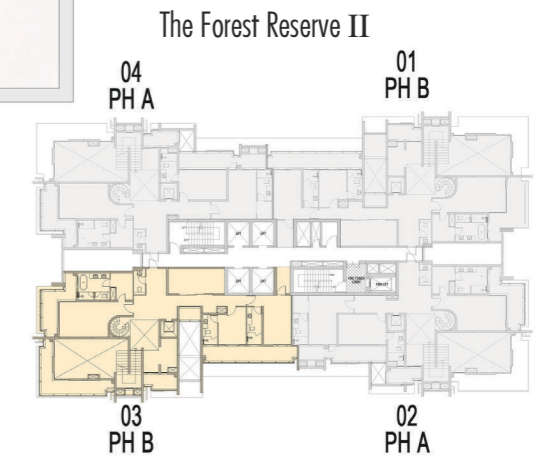
42nd FLOOR

UNIT - PENTHOUSE B LOWER LEVEL		
CARPET AREA	433.32 sq. mt.	4,664 sq. ft.
EXCLUSIVE AREA	768.61 sq. mt.	8,273 sq. ft.
SALEABLE AREA	866.64 sq. mt.	9,328 sq. ft.

# Waterside Residences - The Forest Reserve II - Pentouse B Upper Level

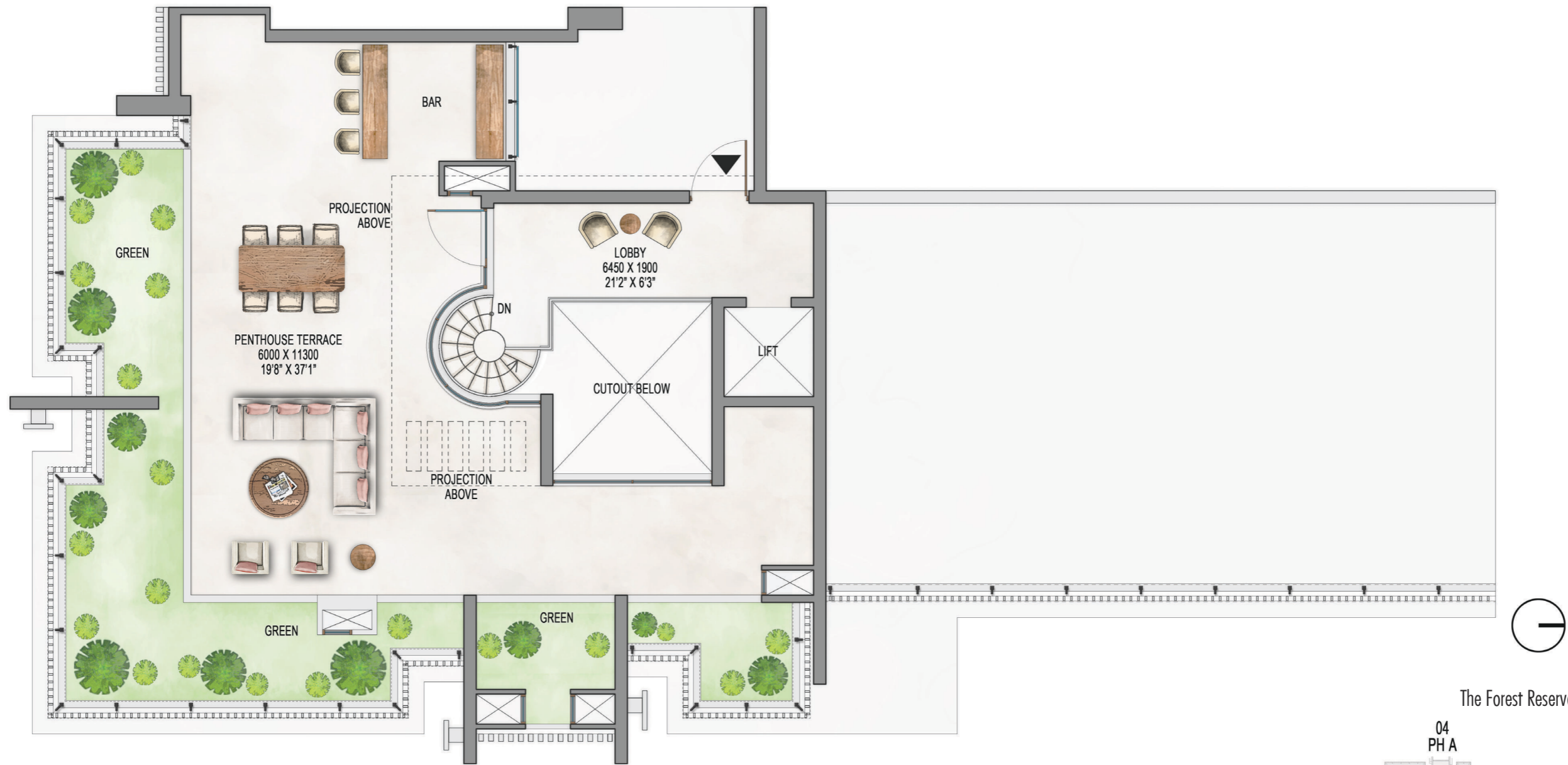


UNIT - PENTHOUSE B UPPER LEVEL		
CARPET AREA	433.32 sq. mt.	4,664 sq. ft.
EXCLUSIVE AREA	768.61 sq. mt.	8,273 sq. ft.
SALEABLE AREA	866.64 sq. mt.	9,328 sq. ft.

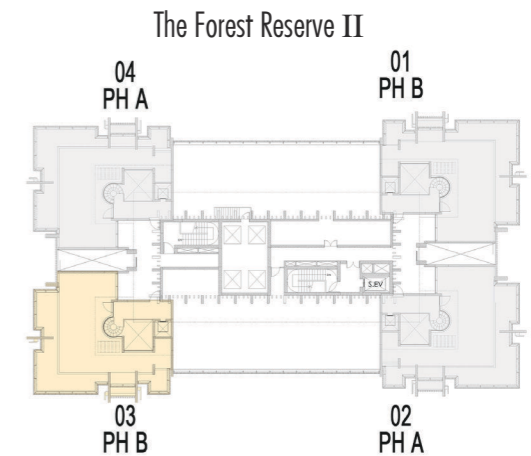


43rd FLOOR

# Waterside Residences - The Forest Reserve II - Pentouse B Terrace Level



UNIT - PENTHOUSE B TERRACE LEVEL		
CARPET AREA	433.32 sq. mt.	4,664 sq. ft.
EXCLUSIVE AREA	768.61 sq. mt.	8,273 sq. ft.
SALEABLE AREA	866.64 sq. mt.	9,328 sq. ft.

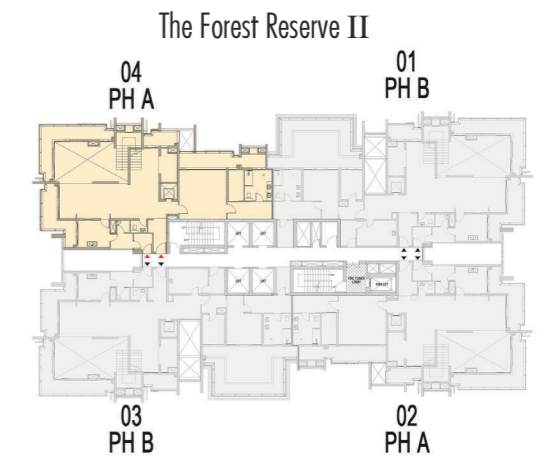


44th FLOOR

# Waterside Residences - The Forest Reserve II - Pentouse A Lower Level

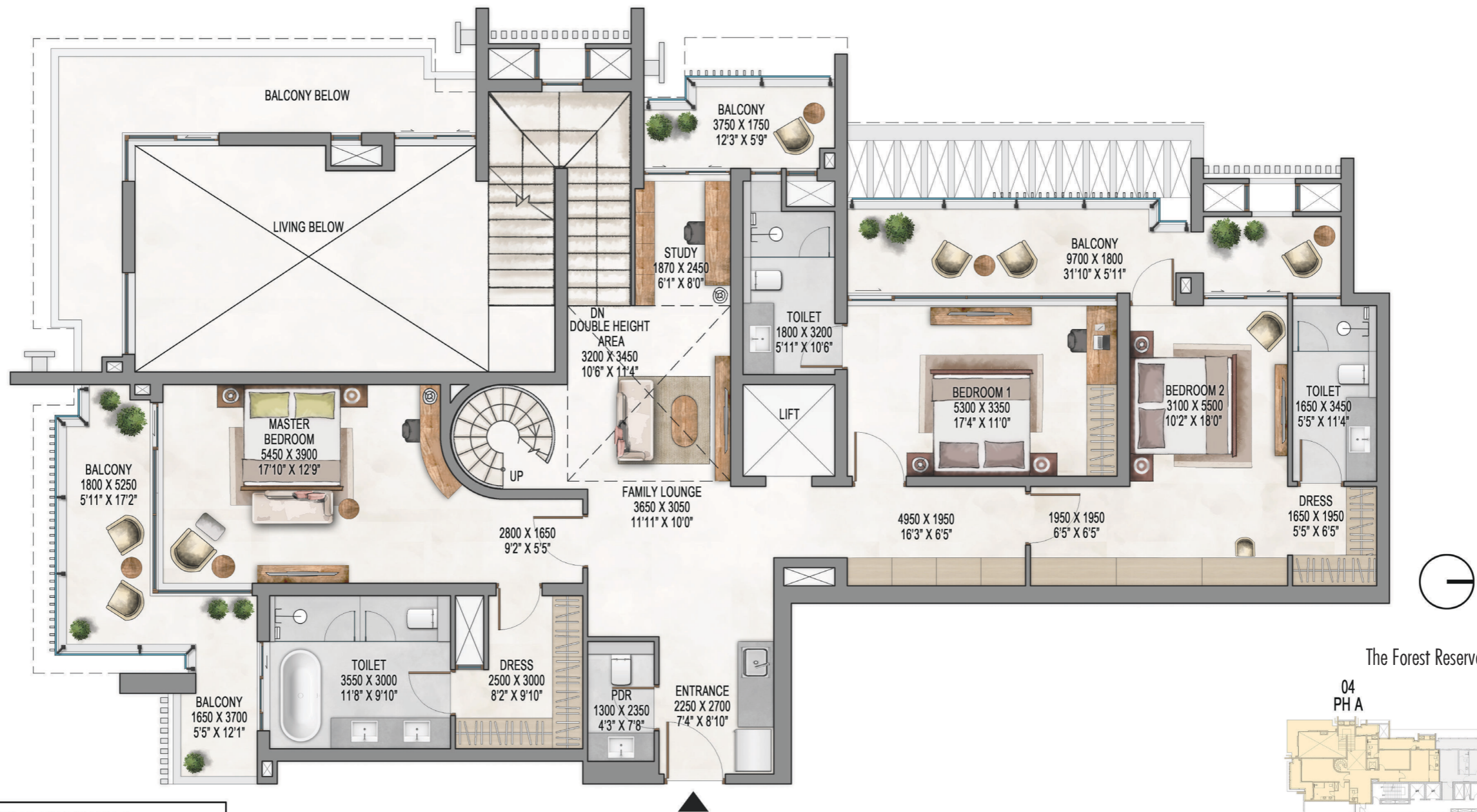


UNIT - PENTHOUSE A LOWER LEVEL		
CARPET AREA	392.62 sq. mt.	4,226 sq. ft.
EXCLUSIVE AREA	687.39 sq. mt.	7,399 sq. ft.
SALEABLE AREA	785.24 sq. mt.	8,452 sq. ft.

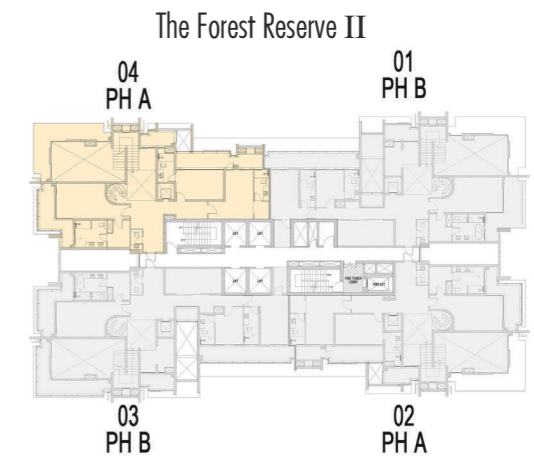


42nd FLOOR

# Waterside Residences - The Forest Reserve II - Pentouse A Upper Level



UNIT - PENTHOUSE A UPPER LEVEL		
CARPET AREA	392.62 sq. mt.	4,226 sq. ft.
EXCLUSIVE AREA	687.39 sq. mt.	7,399 sq. ft.
SALEABLE AREA	785.24 sq. mt.	8,452 sq. ft.

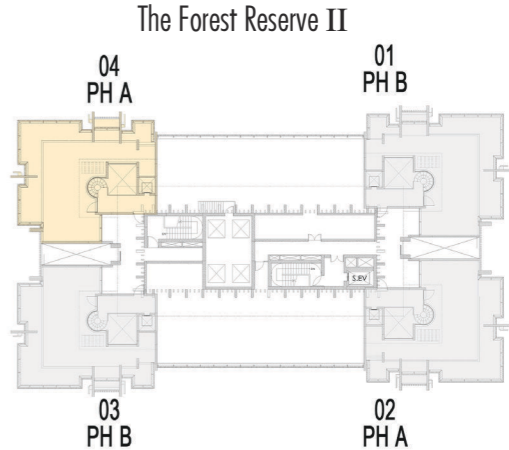


43rd FLOOR

# Waterside Residences - The Forest Reserve II - Pentouse A Terrace Level



UNIT - PENTHOUSE A TERRACE LEVEL		
CARPET AREA	392.62 sq. mt.	4,226 sq. ft.
EXCLUSIVE AREA	687.39 sq. mt.	7,399 sq. ft.
SALEABLE AREA	785.24 sq. mt.	8,452 sq. ft.



44th FLOOR